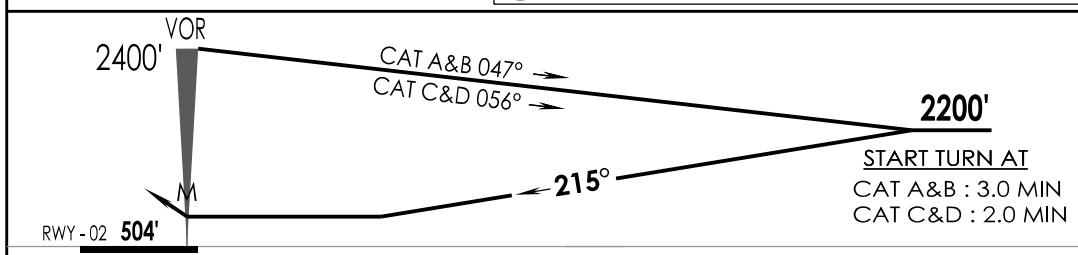
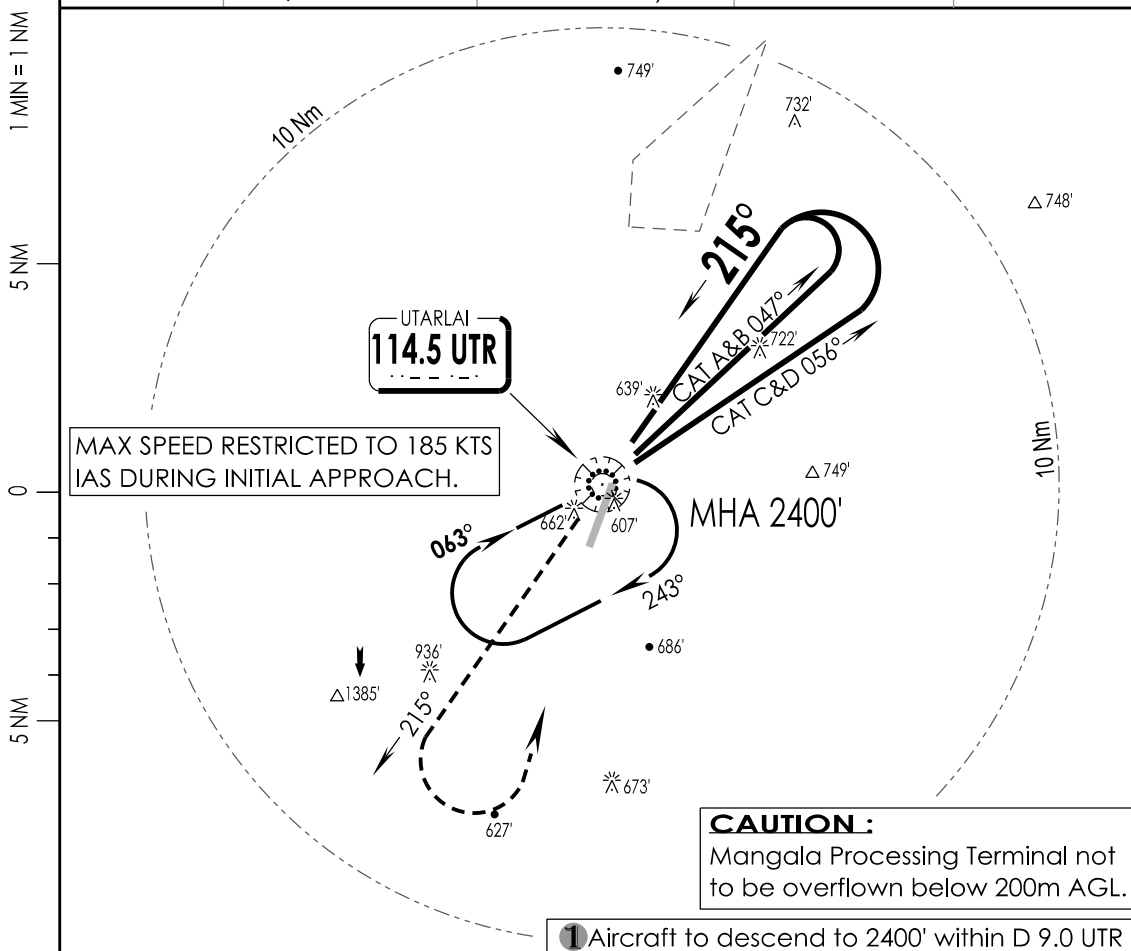


2-2

VIUT IAF UTTARLAI, INDIA  
UTTARLAI 14 FEB 19 VOR Y RWY 20

UTTARLAI Tower 123.2, VC, UC		UTTARLAI Approach 123.2, VC, UC		ATIS 114.5	3500'
VOR UTR 114.5	FINAL Apch Crs 215°	MDA (H) 1170' (665')		Apt Elev 505' RWY 504'	
<p><b>MISSED APCH:</b> Climb STRAIGHT ahead to 1600', then climbing Turn Left to join VOR hold at 2400' or as directed by ATC.</p>					
Alt Set: hPa	Rwy Elev: 17 hPa	Trans level: By ATC	Trans alt: 4000'		MSA UTR VOR



MAPt AT VOR		↑ 1600'	2400' ↓
STRAIGHT-IN LANDING RWY 20		CIRCLE - TO - LAND	
non-CDFA			
MDA(H)			
FULL	ALS OUT	Max Kts	MDA (H) VIS
A RVR 2600m	RVR 3300m	100	1170' (665') 3300m
B RVR 2600m	RVR 3300m	135	
C RVR 2800m	RVR 3500m	180	1330' (825') 3800m
D RVR 2800m	RVR 3500m	205	

LIGHTING : CAT-II (20), CL15M(02/20), HIRL 60 M (02/20), TL (02/20), HIALS (20), PAPI (02L/20R), SALS (02)  
CHANGES : LIGHTING IPDC, DTE OF OPS (T & H)